

Setting up the network interface

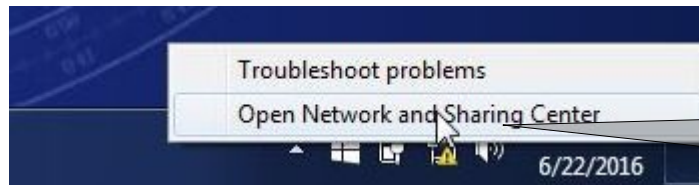
Direct connection IsoLOG <> PC

1



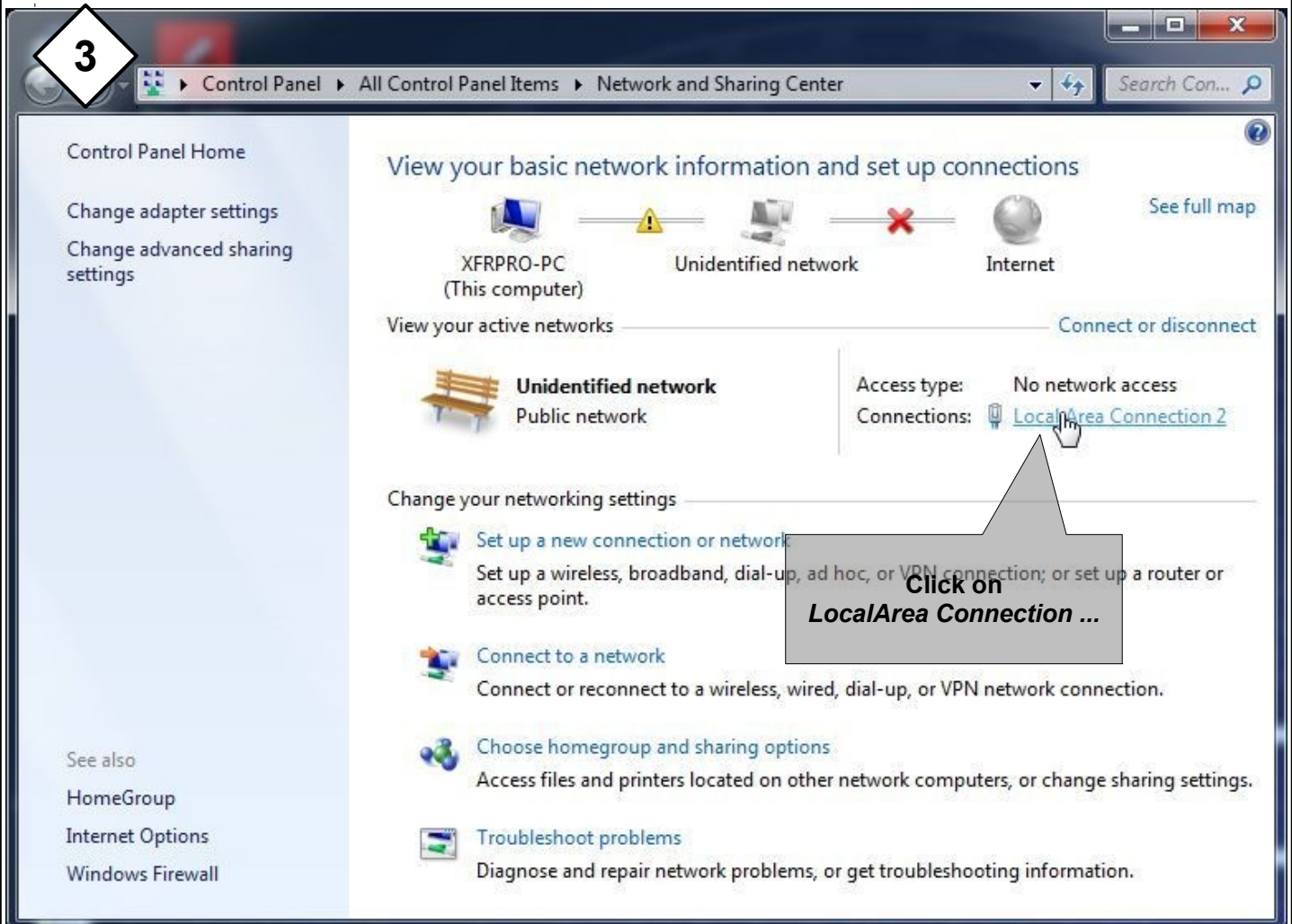
right mouse key

2



click on
Open Network and
Sharing Center

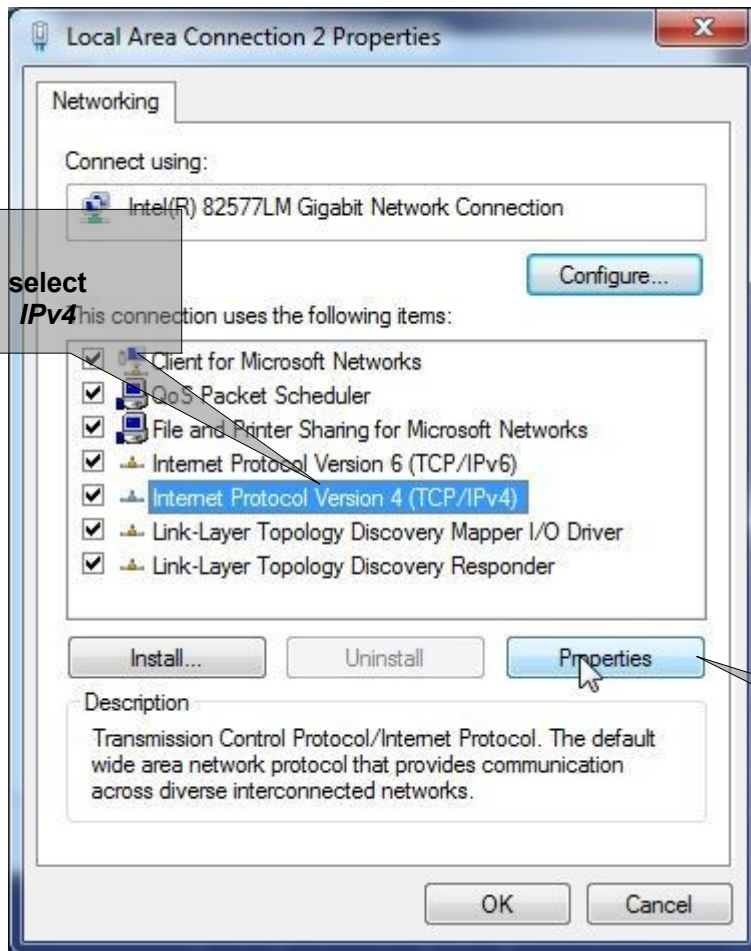
3



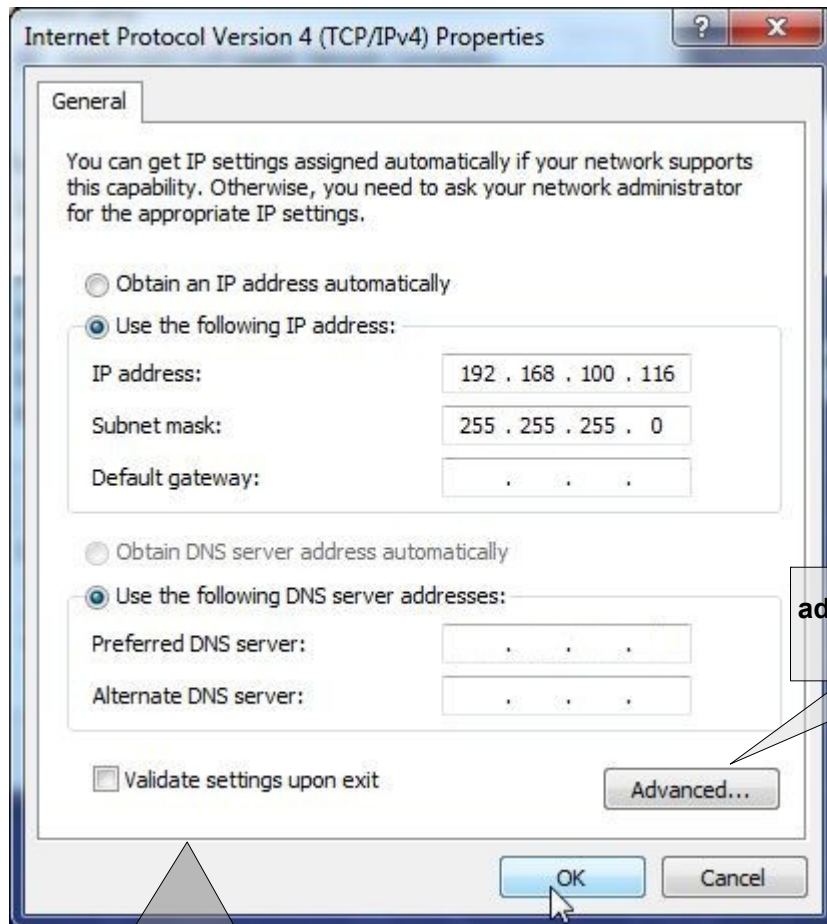
4



5



6



Fill in the IP address. The last group must be different from the *IsoLOG/RSA* IP. For example *IsoLOG* IP address ends with *.115* then fill in *.116* (the Subnet mask is generated automatically)

**IsoLOG static IP address:
192.168.100.115**

**RSA static IP address:
see label on RSA**